



Research, development and innovation activities at LAB

Minna Suutari

Vice President for RDI

June 20th 2023

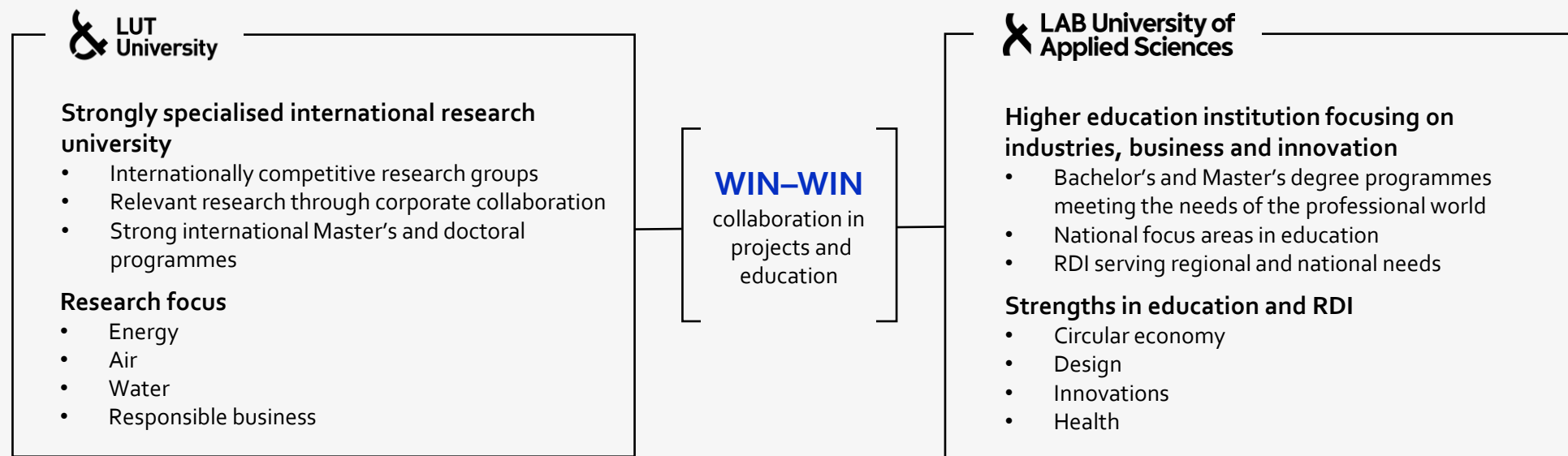


The Best of Both Worlds

- LAB is a university of applied sciences focusing on the working world and innovation.
- We offer students the best of studies and the professional world in one package.
- We boldly experiment with new approaches in collaboration with our corporate partners.
- We play a role in the growth, internationalisation, renewal and sustainable development of businesses.

2 missions, 3 campuses, 2 organisations

LUT UNIVERSITIES



**Together
we are more
on the Green
Campuses**

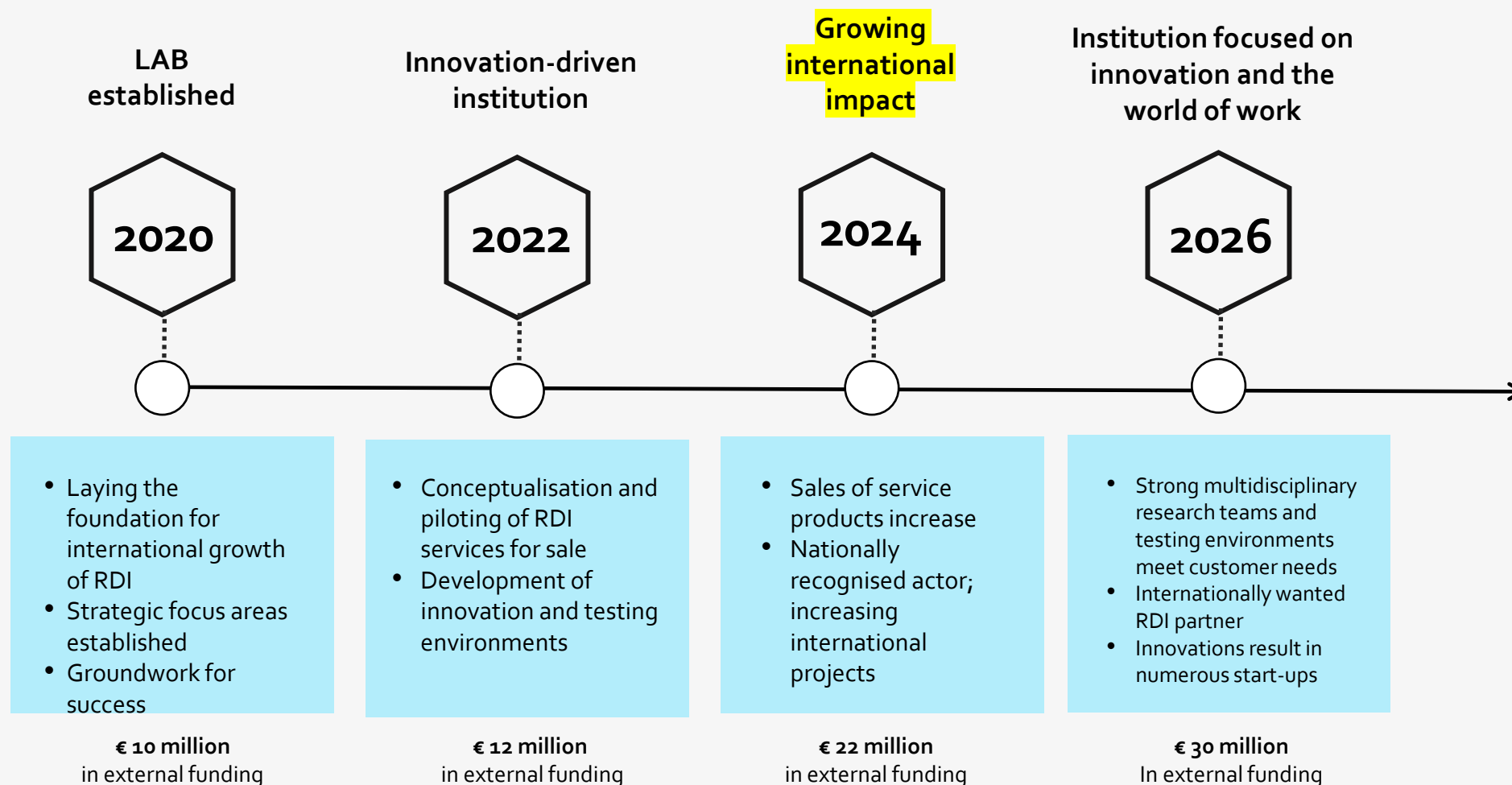
Education: digital collaboration, shared Language Centre, continuing professional education, guidance on study paths

Internationalisation: international programmes subject to a tuition fee jointly marketed in India, China and Vietnam

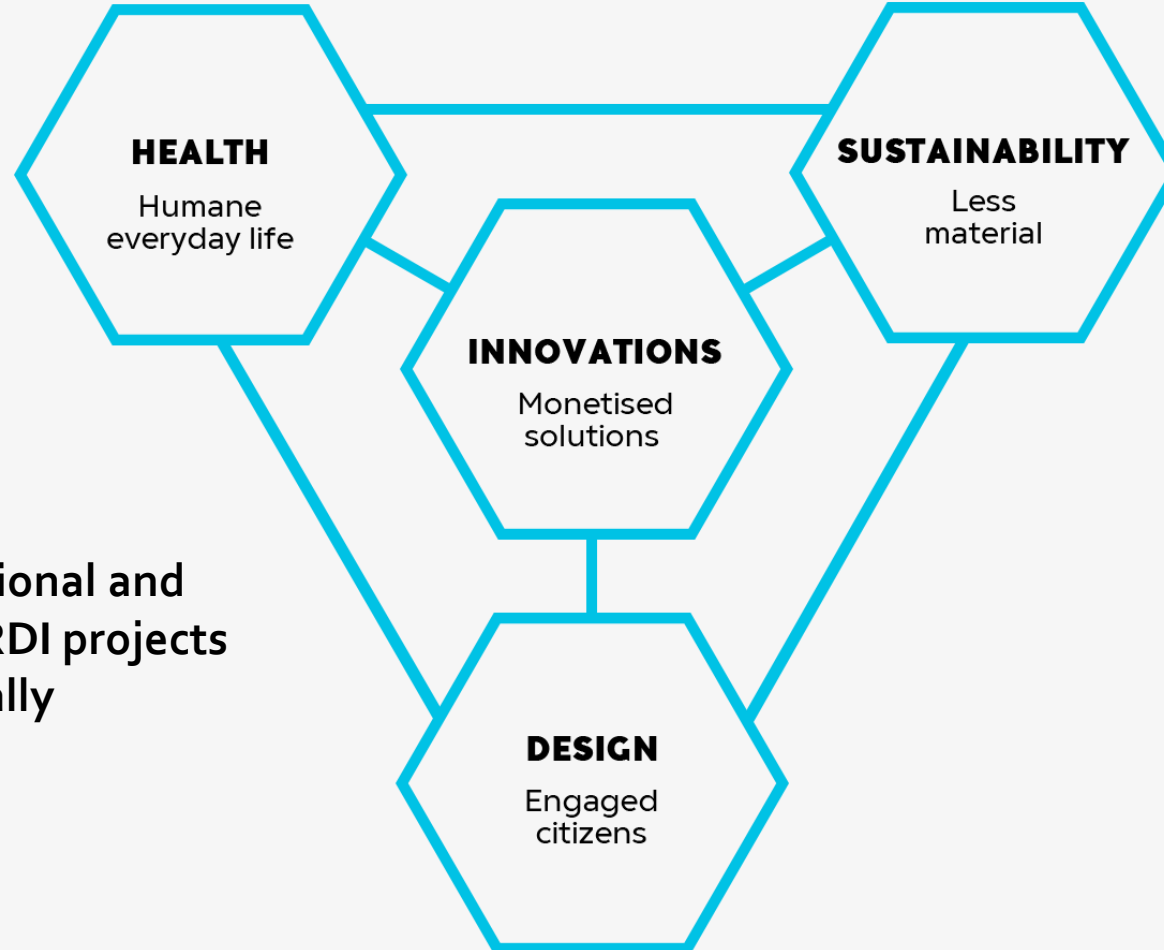
Impact: Green Campus Open, Business Mill student entrepreneurship, corporate collaboration

Shared University Services

LAB roadmap towards strategic goal



RDI FOCUS AREAS



Nearly 200 national and international RDI projects ongoing annually



RDI co-operation between Companies, Cities, LUT & LAB :

- NEW BUSINESS OPPORTUNITIES
- COMMON GOALS
- ENABLING NEW OPENINGS

NEW BUSINESS OPPORTUNITIES



5R REFINERY

New type of scalable sludge repurposing plant to produce resources for the valorisation of tailings, treatment of wastewater and redesign of products and processes at the E SOURCE.

- › 5R refinery is based on 5 recycling principles REPURPOSE, REMOVE, RECOVER, REDESIGN and RECYCLE.
- › Municipal and Forest industry originated sludge is REPURPOSED into resources: biofertilizer, 3D adsorbents, polymer powder and biodegradable hydroxy chelating agents.
- › The consortium jointly executes the project plan where the sharing of knowledge capabilities, technology and resources is based on a fully integrated ecosystem.

**BUSINESS
FINLAND**

PARTNERS:

LAB University of Applied Sciences, LUT University (coordinator), Natural Resources Institute Finland, Stora Enso, Metsä Fiber, Versowood, Biolan Ltd, Weeefiner Ltd, Nanopar Ltd, The City of Heinola, The City of Lappeenranta

BUDGET:

PROJECT PERIOD:

Development of Material Cycles Business Clusters

- Several development projects in 2018-2024

- 1. Pilot laboratory for processing and testing recycled materials (2021)**
 - Biobased materials
 - Textiles
 - Plastics
 - Construction and demolition waste
- 2. Full-scale cluster development – biofibres and biomass, with flagship companies, Lahti & Ladec, LAB, LUT**

REGIONAL GOAL



Food Pilot Plant

- followed by education
and research

NEW OPENINGS



3
CAMPUSES
LAHTI
LAPPEENRANTA
E-CAMPUS

15
Master's degree
programmes

12
Bachelor's
degree

5
FACULTIES

4
Bachelor's
degrees
taught in
English